

TO: Those Making Entries in the 2018 Huntington Show
FROM: Malcolm Shrimplin, Show Secretary and Classification Chair
DATE: Monday, January 22, 2018
RE: 2018 Entry Form and Entry Classification Reminder

Thank you again this year for taking time to groom and properly prepare your entries in advance of the 2018 show at The Huntington. The entry process goes much more smoothly for all involved when you do so.

As you prepare your entries, please note the following:

- Entries will be accepted as follows:
 - 1:00 – 5:00 PM on Friday, March 18th
 - 8:00 – 10:00 AM on Saturday, March 19th
- Entries may be removed starting at 5:00PM on Sunday, March 19th.
- ***The classification system for this year's show has been updated from last year. Please refer to the 2018 Show Rules (the rules contained in this PDF file) to help properly classify your entries for this year's show. (Please do not use a program with rules from a prior years' show to classify your entries.)***
- All your entries must be recorded on the entry form on the next page. This includes entries in any of the four categories (A, B, C & D), regardless of whether they are to be judged or not.
- You may make additional copies of the entry form, as necessary.
- The information on each line should also be included on the standard show entry tag and presented with the entry itself. Again, entries in any of the four categories must have an entry tag, regardless of whether they are to be judged or not.
- **PLEASE SEQUENTIALLY NUMBER YOUR ENTRIES ON THE TAGS AND ENTRY FORM.** You will be assigned a single, unique letter to go in front of each of your entry numbers when your entries are processed. ***This means that you should leave room on the entry tag in front of your entry numbers for a single letter.*** You should also leave the far left column on the entry sheets titled "Letter" blank until you are assigned a letter.
- If you have any questions about preparing your entries for the show, including needing forms or tags, please contact Malcolm Shrimplin at (480) 399-5388 or malcolm.shrimplin@me.com for help.

2018 NACS Show Entry Form

Name: _____ Page ____ of ____

Letter <i>(leave blank - assigned during entry)</i>	# <i>(sequential starting with 1)</i>	Entry Name	Category*	Division*	Group & Sub Group*	Class & Sub Class*

(*Refer to the show program for Division, Group, Sub-Group, and Class information.)

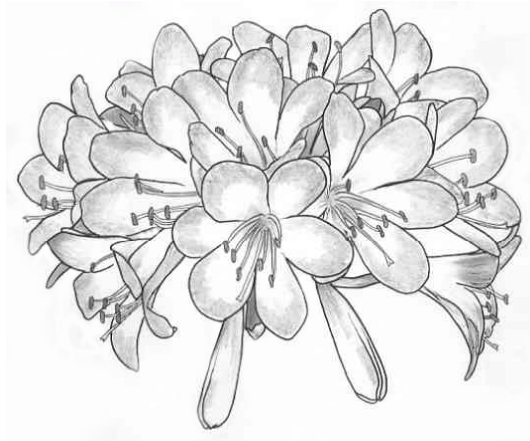
Show Entry Rules for

The 15th Annual Clivia Show and Sale

March 17 & 18, 2018

Sponsored by:

The Southern California Chapter of the North American Clivia Society (NACS) &
The Huntington Library, Art Collections, and Botanical Gardens



Location:

**The Botanical Center at
The Huntington Library, Art Collections, and Botanical Gardens
1151 Oxford Road
San Marino, California 91108**

The Show Open to The Public:

10:00 AM to 5:00 PM Saturday, March 17th
10:00 AM to 5:00 PM Sunday, March 18th

(Show & Sale admission is free with paid admission to The Huntington grounds.)

HUNTINGTON SHOW GENERAL RULES

1. The North American Clivia Society endeavors to educate the public regarding the genus Clivia. The emphases of this show are the horticultural aspects of Clivia plants. Presentation will only play an essential part in breaking any ties that might occur.
2. There is no charge for exhibiting.
3. All entries will be **received** between the hours of **1:00 PM and 5:00 PM on Friday, March 17th and 8:00 AM and 10:00 AM on Saturday, March 18th**. Late entries, arriving after 10:00 AM on Saturday may be entered FOR DISPLAY ONLY and will not be judged. (Exceptions to this rule shall only be granted by The Show Chair.) No entry may be **removed** before **5:00 PM on Sunday, March 19th** when the Clivia Show closes.
4. Judging will begin promptly at **2:00 PM on Saturday** while the show is open to the public. Only the Judges Chair and Show Chair shall interact with the Judges and Stewards during this time.
5. Show officials will exercise all possible precautions for protecting exhibits. However, neither they nor The Huntington will be responsible for any loss or damage that may occur. All personal property (e.g.: containers and accessories) should be marked with the name of the exhibitor. If doing so, all entries should be marked in a manner not easily identifiable during judging, i.e.- marking on bottom of pots, entrant's personal plant tags pushed down, etc.
6. Every entry must have an accompanying entry tag in order to be judged. Names, numbers or any other marks identifying the exhibitor are not permitted on the visible portion of the entry tag, pot or any plant tag(s). Please note that this rule applies to every entry in the show, even non-judged entries.
7. Classification of entries in their respective categories, divisions and groups is at the discretion of the exhibitor with advice and consent of The Classification Chair. The Classification Chair and Placement Chair (or their authorized representatives) have the authority to re-classify an entry at any time prior to the start of judging. Additionally, at the authorization of the Judges Chair, the panel of judges has the right to reclassify entries to other categories, divisions, or groups, as deemed appropriate. The judges' panel must make sure that entry tags are corrected for entries reclassified during judging.
8. The color classes include idealized colors not only from The Royal Horticultural Society Color Chart (RHS), but also from the Clivia Color Chart I (CCC1) and Clivia Color Chart II (CCC2). Each class first lists the RHS color identifier, second, the Clivia Color Chart I identifier, and, third, the Clivia Color Chart II identifier. Each is separated by a semicolon (;). For example:

Class 3: Orange Colors (RHS 24 to 29) Idealized Color (N25B; OR6; 3-26)

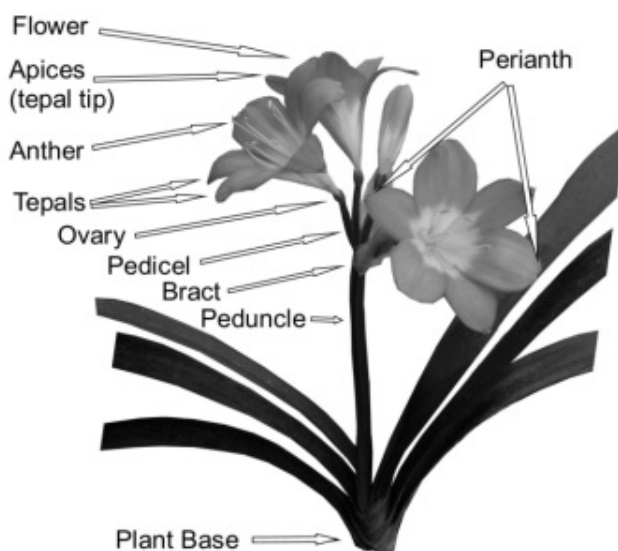
N25B is from the RHS chart. OR 6 is from the Clivia Color Chart I. 3-26 is from the Clivia Color Chart II. An "N/A" indicates that no color was available from a particular chart. Final decisions on flower color made by The Classification Chair (for show entry classification purposes) will be made based upon the RHS color chart range that directly follows the class name. From the above example, that would be RHS 24 to 29.
9. Only the Placement Chair, Stewards and Show Chair will be permitted to physically move any of the entries once placed onto the show floor.
10. An exhibitor attempting to influence any of the judges in any way shall have all of his or her entries disqualified by the Judge's Chair in consultation with the Show Chair.
11. No plant material (i.e. pollen, seeds, etc.) may be exchanged at the show.

NACS SHOW HORTICULTURAL RULES

1. Exhibition is open to all, not just NACS members.
2. Without prior arrangement with the Show Chair, all show entries shall be actually physically entered by the exhibitors or their representatives.
3. Grooming is ultimately the responsibility of the exhibitors or their representatives. A minimally stocked grooming station will be available during the entry period. However, **it is strongly recommended that all plants be groomed prior to arriving at the show.**
4. Entries in Category A (Blooming Plants) and B (Foliage Plants), as well as Category D – Division 1 (Juniors' Displays), must have been grown for at least 6 months by the named exhibitors.
5. Plant materials exhibited in Category C, Division 1 (Floral Arrangements) are exempt from Rule 4. However, all entries in Category C should be the creative work of the entrant.
6. All entries in Divisions 1 thru 22 in Category A (Blooming Plants) must have peduncles (scapes) still attached to the original plant. Peduncles severed from the plant may be entered as umbels in Category A, Division 23, Group U. Pedicels (florets) severed from the peduncle may be entered as single flowers in Category A, Division 23, Group F.
7. Staking of peduncles is allowed. Stakes should not protrude above the top of the umbel. Ideally, staking should be done as discreetly as possible using green colored stakes that are secured along the peduncle with green floral tape.
8. Fruits may be covered with a sleeve, netting, or other protective device. This will not result in scoring deductions by the panel of judges.
9. Artificial enhancement of the appearance of an entry (excessive trimming, leaf waxes, dyes, etc) is undesirable and may result in significant point deductions and/or disqualification. Materials exhibited in Category C, Division 1 (Floral Arrangements) are exempt from this rule.
10. Plants and plant material exhibiting viral infection or active insect infestations shall be disqualified and removed from the show area.
11. All containers used to enter plants should be thoroughly cleaned and free of as many visible distinguishing marks as possible. Top dressing with bark is desirable. Bark will be supplied to exhibitors by the Show Committee, as needed.
12. **Further Longwood Gardens Show Entry Container Requirement:** For entries made into the show at Longwood Gardens in Category A (Blooming Plants) and B (Foliage Plants), the containers should be simple, unglazed terracotta or green-colored plastic. Wooden tubs are also acceptable. Unacceptable pots may be inserted inside clean pots to hide defects.

This Show is comprised of four main competitive categories that are expanded on the following pages:

1. Flowering (Category A)
2. Foliage (Category B)
3. Creative Arts (Category C)
4. Juniors' and Enthusiasts' Displays (Category D)



SUMMARY OF CATEGORIES, DIVISIONS, GROUPS & CLASSES

CATEGORY A: FLOWERING (Plants, Umbels, and Florets) (pp. 4-8)

DIVISION 1: Blooming *C. miniata* (pp. 4)

Group NV & V: Non-Variegated & Variegated Leaves

Classes 1 – 60: Various Classes by Color & Form

DIVISION 10: Blooming Non-*C. miniata* Species (pp. 5)

Group N: *C. nobilis*

Group G: *C. gardenii*

Group C: *C. caulescens*

Group M: *C. mirabilis*

Group R: *C. robusta*

Classes 1 – 60: Various Classes by Color & Form

DIVISION 20: All Blooming Inter-Specific Hybrids (pp. 6)

Group X: All Known Named Interspecific Hybrids

Classes 1 – 60: Various Classes by Color & Form

DIVISION 22: Display Plants (pp. 7)

Group NV & V: Non-Variegated & Variegated Leaves

Classes 1 – 60: Various Classes by Color & Form

DIVISION 23: Blooms (pp. 8)

Group U & F: Umbels & Florets

Classes 1 – 60: Various Classes by Color & Form

CATEGORY B: FOLIAGE (Plants, Berries, and Seeds) (pp. 9-11)

DIVISION 1: Non-Variegated *C. miniata* (pp. 9)

Groups & Sub-Groups (based on leaf length and width)

DIVISION 2: Longitudinal Variegation in *C. miniata* (pp. 10)

Groups & Sub-Groups (based on leaf length and width)

Classes (based on type of longitudinal variegation)

DIVISION 3: Non-Longitudinal Variegation in *C. miniata* (pp. 10)

Groups & Sub-Groups (based on leaf length and width)

Classes (based on type of non-longitudinal variegation)

DIVISION 4: Textured Foliage Forms/Habits in *C. miniata* (pp. 11)

Groups & Sub-Groups (based on leaf length and width)

Classes (based on type of form/habit)

DIVISION 5: Foliage *C. miniata* Display Plants (pp. 11)

DIVISION 6: Foliage Non-*C. miniata* Species (pp. 11)

Groups (based on species)

DIVISION 7: Foliage Inter-Specific Hybrids (pp. 11)

DIVISION 8: Berries and Seeds (pp. 11)

Groups (based on berry size and number of seeds)

CATEGORY C: Creative Arts (pp.12)

DIVISION 1: Floral Arrangements

DIVISION 2: Photography (4 groups based on photography type)

CATEGORY D: Juniors' & Enthusiasts' Displays (pp. 13)

DIVISION 1: Juniors' displays (3 groups based on age of entrant)

DIVISION 2: Enthusiasts' Displays

CATEGORY A - FLOWERING
Blooming Plants, Cut Peduncles (Umbels), and
Cut Pedicels (Florets)

DIVISION 1: Blooming C. miniata

Note: Classes within any flowering group may be divided by the Classification and Placement Chairs and also by a consensus of the Judges, depending on the number of entries in each class and other characteristics, such as shades of color(s), overall size, tepal length/width, etc.

Group NV: Non-Variegated Leaves or **Group V:** Variegated Leaves

Class 1: Yellows (RHS 2 to 13) Idealized Color (RHS=12A; C1=YG4; C2=9-88)

Class 2: Yellow-Oranges (RHS 14 to 23) Idealized Color (RHS=17B; C1=N/A; C2=N/A)

Class 3: Oranges (RHS 24 to 29) Idealized Color (RHS=N25B; C1=OR6; C2=3-26)

Class 4: Orange-Reds (RHS 30 to 35) Idealized Color (RHS=N30A; C1=OR 3; C2=2-11)

Class 5: Reds (RHS 36 to 56) Idealized Color (RHS=46B; C1=OR 1; C2=1-3)

Class 10: All Other Solid/Non-Patterned/Non-Pastel Colors [Greens, etc.]

Class 11: Creams - Yellow Pastels (RHS=11D; C1=YG1; C2=6-57)

Class 12: Apricots - Yellow-Orange Pastels (RHS=18B and 19C; C1=D8; C2=8-75)

Class 13: Peaches - Orange Pastels (RHS=24D and 25C; C1=OR 7; C2=7-68)

Class 14: Salmons - Orange-Red Pastels (RHS=32D; C1=D6; C2=4-32)

Class 15: Pinks - Red Pastels (RHS=38A, 38D and 39D; C1=D1; C2=5-48)

Class 20: All Other Solid/ Non-Patterned Pastel Colors

Classes 30: Green Throats [Oranges (30O), Red (30R) Yellows (30Y), Peaches (30P), etc.]

Classes 40: Patterned/ Non-Solid Colors [Large Throats (40LT), Banded (40B), Edged (40E), 'Party Color' (Conway) (40PC), 'Ghost' (Nakamura) (40G), 'Water Colors' (Solomone) (WC), 'White Lips' (Floreac) (40WL), Picotee (40P), Bi-Color (40BC), Tri-Color (40TC), etc.]

Classes 50: Unusual Flower Forms [Spiders (50SPI), Keeled (50K), Quilled (50Q), Multi-Tepaled (50MT), Dwarf (50D), Miniature (50M), Spatulated (50SPA), etc.]

Class 60: First Flowering Seedling

DIVISION 10: Blooming Non-C. miniata Species

Group N: C. nobilis

Group G: C. gardenii

Group C: C. caulescens

Group M: C. mirabilis

Group R: C. robusta

Class 1: Yellows (RHS 2 to 13) Idealized Color (RHS=12A; C1=YG4; C2=9-88)

Class 2: Yellow-Oranges (RHS 14 to 23) Idealized Color (RHS=17B; C1=N/A; C2=N/A)

Class 3: Oranges (RHS 24 to 29) Idealized Color (RHS=N25B; C1=OR6; C2=3-26)

Class 4: Orange-Reds (RHS 30 to 35) Idealized Color (RHS=N30A; C1=OR 3; C2=2-11)

Class 5: Reds (RHS 36 to 56) Idealized Color (RHS=46B; C1=OR 1; C2=1-3)

Class 10: All Other Solid/Non-Patterned/Non-Pastel Colors [Greens, etc.]

Class 11: Creams - Yellow Pastels (RHS=11D; C1=YG1; C2=6-57)

Class 12: Apricots - Yellow-Orange Pastels (RHS=18B and 19C; C1=D8; C2=8-75)

Class 13: Peaches - Orange Pastels (RHS=24D and 25C; C1=OR 7; C2=7-68)

Class 14: Salmons - Orange-Red Pastels (RHS=32D; C1=D6; C2=4-32)

Class 15: Pinks - Red Pastels (RHS=38A, 38D and 39D; C1=D1; C2=5-48)

Class 20: All Other Solid/ Non-Patterned Pastel Colors

Classes 30: Green Throats [Oranges (30O), Red (30R) Yellows (30Y), Peaches (30P), etc.]

Classes 40: Patterned/ Non-Solid Colors [Large Throats (40LT), Banded (40B), Edged (40E), 'Party Color' (Conway) (40PC), 'Ghost' (Nakamura) (40G), 'Water Colors' (Solomone) (WC), 'White Lips' (Floreal) (40WL), Picotee (40P), Bi-Color (40BC), Tri-Color (40TC), etc.]

Classes 50: Unusual Flower Forms [Spiders (50SPI), Keeled (50K), Quilled (50Q), Multi-Tepaled (50MT), Dwarf (50D), Miniature (50M), Spatulated (50SPA), etc.]

Class 60: First Flowering Seedling

DIVISION 20: All Blooming Inter-Specific Hybrids

Group X: (All Known Named Interspecific-Hybrids with distinct groups)

Class 1: Yellows (RHS 2 to 13) Idealized Color (RHS=12A; C1=YG4; C2=9-88)

Class 2: Yellow-Oranges (RHS 14 to 23) Idealized Color (RHS=17B; C1=N/A; C2=N/A)

Class 3: Oranges (RHS 24 to 29) Idealized Color (RHS=N25B; C1=OR6; C2=3-26)

Class 4: Orange-Reds (RHS 30 to 35) Idealized Color (RHS=N30A; C1=OR 3; C2=2-11)

Class 5: Reds (RHS 36 to 56) Idealized Color (RHS=46B; C1=OR 1; C2=1-3)

Class 10: All Other Solid/Non-Patterned/Non-Pastel Colors [Greens, etc.]

Class 11: Creams - Yellow Pastels (RHS=11D; C1=YG1; C2=6-57)

Class 12: Apricots - Yellow-Orange Pastels (RHS=18B and 19C; C1=D8; C2=8-75)

Class 13: Peaches - Orange Pastels (RHS=24D and 25C; C1=OR 7; C2=7-68)

Class 14: Salmons - Orange-Red Pastels (RHS=32D; C1=D6; C2=4-32)

Class 15: Pinks - Red Pastels (RHS=38A, 38D and 39D; C1=D1; C2=5-48)

Class 20: All Other Solid/ Non-Patterned Pastel Colors

Classes 30: Green Throats [Oranges (30O), Red (30R) Yellows (30Y), Peaches (30P), etc.]

Classes 40: Patterned/ Non-Solid Colors [Large Throats (40LT), Banded (40B), Edged (40E), 'Party Color' (Conway) (40PC), 'Ghost' (Nakamura) (40G), 'Water Colors' (Solomone) (WC), 'White Lips' (Floreac) (40WL), Picotee (40P), Bi-Color (40BC), Tri-Color (40TC), etc.]

Classes 50: Unusual Flower Forms [Spiders (50SPI), Keeled (50K), Quilled (50Q), Multi-Tepaled (50MT), Dwarf (50D), Miniature (50M), Spatulated (50SPA), etc.]

Class 60: First Flowering Seedling

DIVISION 22: Display Plants

In order to qualify as a specimen, plants must possess a minimum of 3 mature growths and have a minimum of 2 peduncles (scapes) on attached offsets. At least two umbels must have a minimum of 50% of the florets opened.

Group NV: Non-Variegated Leaves **or** **Group V:** Variegated Leaves

Class 1: Yellows (RHS 2 to 13) Idealized Color (RHS=12A; C1=YG4; C2=9-88)

Class 2: Yellow-Oranges (RHS 14 to 23) Idealized Color (RHS=17B; C1=N/A; C2=N/A)

Class 3: Oranges (RHS 24 to 29) Idealized Color (RHS=N25B; C1=OR6; C2=3-26)

Class 4: Orange-Reds (RHS 30 to 35) Idealized Color (RHS=N30A; C1=OR 3; C2=2-11)

Class 5: Reds (RHS 36 to 56) Idealized Color (RHS=46B; C1=OR 1; C2=1-3)

Class 10: All Other Solid/Non-Patterned/Non-Pastel Colors [Greens, etc.]

Class 11: Creams - Yellow Pastels (RHS=11D; C1=YG1; C2=6-57)

Class 12: Apricots - Yellow-Orange Pastels (RHS=18B and 19C; C1=D8; C2=8-75)

Class 13: Peaches - Orange Pastels (RHS=24D and 25C; C1=OR 7; C2=7-68)

Class 14: Salmons - Orange-Red Pastels (RHS=32D; C1=D6; C2=4-32)

Class 15: Pinks - Red Pastels (RHS=38A, 38D and 39D; C1=D1; C2=5-48)

Class 20: All Other Solid/ Non-Patterned Pastel Colors

Classes 30: Green Throats [Oranges (30O), Red (30R) Yellows (30Y), Peaches (30P), etc.]

Classes 40: Patterned/ Non-Solid Colors [Large Throats (40LT), Banded (40B), Edged (40E), 'Party Color' (Conway) (40PC), 'Ghost' (Nakamura) (40G), 'Water Colors' (Solomone) (WC), 'White Lips' (Floreac) (40WL), Picotee (40P), Bi-Color (40BC), Tri-Color (40TC), etc.]

Classes 50: Unusual Flower Forms [Spiders (50SPI), Keeled (50K), Quilled (50Q), Multi-Tepaled (50MT), Dwarf (50D), Miniature (50M), Spatulated (50SPA), etc.]

Class 60: First Flowering Seedling

DIVISION 23: Blooms*

Group U: Cut Peduncles (i.e. Umbels)

Group F: Cut Pedicels (i.e. Florets)

Class 1: Yellows (RHS 2 to 13) Idealized Color (RHS=12A; C1=YG4; C2=9-88)

Class 2: Yellow-Oranges (RHS 14 to 23) Idealized Color (RHS=17B; C1=N/A; C2=N/A)

Class 3: Oranges (RHS 24 to 29) Idealized Color (RHS=N25B; C1=OR6; C2=3-26)

Class 4: Orange-Reds (RHS 30 to 35) Idealized Color (RHS=N30A; C1=OR 3; C2=2-11)

Class 5: Reds (RHS 36 to 56) Idealized Color (RHS=46B; C1=OR 1; C2=1-3)

Class 10: All Other Solid/Non-Patterned/Non-Pastel Colors [Greens, etc.]

Class 11: Creams - Yellow Pastels (RHS=11D; C1=YG1; C2=6-57)

Class 12: Apricots - Yellow-Orange Pastels (RHS=18B and 19C; C1=D8; C2=8-75)

Class 13: Peaches - Orange Pastels (RHS=24D and 25C; C1=OR 7; C2=7-68)

Class 14: Salmons - Orange-Red Pastels (RHS=32D; C1=D6; C2=4-32)

Class 15: Pinks - Red Pastels (RHS=38A, 38D and 39D; C1=D1; C2=5-48)

Class 20: All Other Solid/ Non-Patterned Pastel Colors

Classes 30: Green Throats [Oranges (30O), Red (30R) Yellows (30Y), Peaches (30P), etc.]

Classes 40: Patterned/ Non-Solid Colors [Large Throats (40LT), Banded (40B), Edged (40E), 'Party Color' (Conway) (40PC), 'Ghost' (Nakamura) (40G), 'Water Colors' (Solomone) (WC), 'White Lips' (Floreac) (40WL), Picotee (40P), Bi-Color (40BC), Tri-Color (40TC), etc.]

Classes 50: Unusual Flower Forms [Spiders (50SPI), Keeled (50K), Quilled (50Q), Multi-Tepaled (50MT), Dwarf (50D), Miniature (50M), Spatulated (50SPA), etc.]

Class 60: First Flowering Seedling

** Vases and cut flower tubes will be provided during the exhibit entry.*

CATEGORY B - FOLIAGE
Foliage Plants (may be in flower or fruit), Berries, and Seeds

DIVISION 1: Non-Variegated C. miniata

Group A: Narrow Leaves Less than 37.5mm (about 1.5 inches)

Group B: Standard Leaves Between 37.5mm (about 1.5 inches) and 75mm (about 3 inches)

Sub-Group a: Dwarf - Less than 200mm (about 8 inches) in length.

Sub-Group b: Small - Between 200mm (about 8 inches) and 400mm (about 16 inches) in length.

Sub-Group c: Medium - Between 400mm (about 16 inches) and 800mm (about 32 inches) in length.

Sub-Group d: Large - Between 800mm (about 32 inches) and 1200mm (about 4 feet) in length.

Sub-Group e: Giant - Greater than 1200mm (about 4 feet) in length.

Sub-Group f: All Leaf Lengths (which do not have their own Sub-Group listed)

Group C: Broad Leaves Greater than 75mm (about 3 inches)

Sub-Group a: Dwarf - Less than 200mm (about 8 inches) in length.

Class 1:

Leaf length 120 mm (5 inches)

Leaf width 110 – 120 mm (<5 inches)

Ideal leaf length to width ratio is 1:1 to 1.5:1

Class 10: All Others

Sub-Group b: Small - Between 200mm (about 8 inches) and 400mm (about 16 inches) in length.

Class 1:

Leaf length 300 – 500 mm (12 to 20 inches)

Leaf width 90 – 110 mm (about 4 inches)

Ideal leaf length to width ratio is 3:1 to 5:1

Class 2:

Leaf length 300 – 350 mm (12 to 14 inches)

Leaf width 120 – 130 mm (about 5 inches)

Ideal leaf length to width ratio is 1:1 to 1:1.5

Bright leaves with clear ridged and thick veins

Class 3:

Leaf length 200 – 300 mm (8 to 12 inches)

Leaf width 90 – 150 mm (4 to 6 inches)

Ideal leaf length to width ratio is 1.5:1 to 2.5:1

Class 10: All Others

Sub-Group c: Medium - Between 400mm (about 16 inches) and 800mm (about 32 inches) in length.

Sub-Group d: Large - Between 800mm (about 32 inches) and 1200mm (about 4 feet) in length.

Sub-Group e: Giant - Greater than 1200mm (about 4 feet) in length.

Sub-Group f: All Leaf Lengths (which do not have their own Sub-Group listed)

Group D: All Leaf Widths (which do not have their own Group listed)

Sub-Group a: Dwarf - Less than 200mm (about 8 inches) in length.

Sub-Group b: Small - Between 200mm (about 8 inches) and 400mm (about 16 inches) in length.

Sub-Group c: Medium - Between 400mm (about 16 inches) and 800mm (about 32 inches) in length.

Sub-Group d: Large - Between 800mm (about 32 inches) and 1200mm (about 4 feet) in length.

Sub-Group e: Giant - Greater than 1200mm (about 4 feet) in length.

Sub-Group f: All Leaf Lengths (which do not have their own Sub-Group listed)

DIVISION 2: Longitudinal Variegation in C. miniata

Group A: Narrow Leaves Less than 37.5mm (about 1.5 inches)

Group B: Standard Leaves Between 37.5mm (about 1.5 inches) and 75mm (about 3 inches)

Group C: Broad Leaves Greater than 75mm (about 3 inches)

Group D: All Leaf Widths (which do not have their own Group listed)

Sub-Group a: Dwarf - Less than 200mm (about 8 inches) in length.

Sub-Group b: Small - Between 200mm (about 8 inches) and 400mm (about 16 inches) in length.

Sub-Group c: Medium - Between 400mm (about 16 inches) and 800mm (about 32 inches) in length.

Sub-Group d: Large - Between 800mm (about 32 inches) and 1200mm (about 4 feet) in length.

Sub-Group e: Giant - Greater than 1200mm (about 4 feet) in length.

Sub-Group f: All Leaf Lengths (which do not have their own Sub-Group listed)

Class 1: Striped

Leaves which have many narrow, continuous lines running from base to tip of leaf.

Sub-Class a: Rainbow

A prefix stating the number of different colors present is common.

Sub-Class b: Golden Threads

The two colors must have a ratio of 1:1; each color must be clear.

Class 2: Marginal

Leaves which have broad light bands along both leaf margins.

Class 3: Median

Leaves which have a band running along the mid-line from base to tip of leaf.

Class 4: Mandarin Duck

Leaves which are divided lengthwise into two equal parts, one half white or cream and the other half green.

DIVISION 3: Non-Longitudinal Variegation in C. miniata

Group A: Narrow Leaves Less than 37.5mm (about 1.5 inches)

Group B: Standard Leaves Between 37.5mm (about 1.5 inches) and 75mm (about 3 inches)

Group C: Broad Leaves Greater than 75mm (about 3 inches)

Group D: All Leaf Widths (which do not have their own Group listed)

Sub-Group a: Dwarf - Less than 200mm (about 8 inches) in length.

Sub-Group b: Small - Between 200mm (about 8 inches) and 400mm (about 16 inches) in length.

Sub-Group c: Medium - Between 400mm (about 16 inches) and 800mm (about 32 inches) in length.

Sub-Group d: Large - Between 800mm (about 32 inches) and 1200mm (about 4 feet) in length.

Sub-Group e: Giant - Greater than 1200mm (about 4 feet) in length.

Sub-Group f: All Leaf Lengths (which do not have their own Sub-Group listed)

Class 1: Light of Buddha

Leaves should have non-distinct horizontal white or yellow areas or blotches on an otherwise green leaf.

Class 2: Akebono

Leaves should have distinct horizontal white or yellow bands on an otherwise green leaf.

Class 3: Broken Strings

Leaves which have very thin sometimes broken string-like lines that run lengthwise through the leaves.

Class 4: Tiger

Leaves that have distinct light green horizontal bands the entire length of the leaf.

Class 10: All Other Non-Longitudinal Variegation (Viridescent, Moonlight, False Tiger)

Class 11: Tessellated or "Painted Face"

Leaf veins should be dark green and the spaces between should be distinctly lighter and translucent presenting noticeable contrast.

DIVISION 4: Textured Foliage Forms/Habits in C. miniata

Group A: Narrow Leaves Less than 37.5mm (about 1.5 inches)

Group B: Standard Leaves Between 37.5mm (about 1.5 inches) and 75mm (about 3 inches)

Group C: Broad Leaves Greater than 75mm (about 3 inches)

Group D: All Leaf Widths (which do not have their own Group listed)

Sub-Group a: Dwarf - Less than 200mm (about 8 inches) in length.

Sub-Group b: Small - Between 200mm (about 8 inches) and 400mm (about 16 inches) in length.

Sub-Group c: Medium - Between 400mm (about 16 inches) and 800mm (about 32 inches) in length.

Sub-Group d: Large - Between 800mm (about 32 inches) and 1200mm (about 4 feet) in length.

Sub-Group e: Giant - Greater than 1200mm (about 4 feet) in length.

Sub-Group f: All Leaf Lengths (which do not have their own Sub-Group listed)

Class 1: Bullate (Dragon Skin)

Leaves which have a checkerboard placement of raised areas (convex) between the veins, distributed across the entire leaf.

Class 2: Venation (Waffle Pattern)

The raised veins form square-like patterns (concave) which are distributed across the entire leaf.

Class 3: Tiger Textured

Leaves which have raised bands reminiscent of the brindled stripes of a tiger.

Class 10: All Other Textured Foliage (fluted, pleated, plisse)

DIVISION 5: Foliage C. miniata Display Plants

Group F: Specimen Plants

In order to qualify as a specimen, plants must possess a minimum of 3 mature (blooming size) growths all from the same clone. Specimens may be hybrids or species.

DIVISION 6: Foliage Non-C. miniata Species

Each species has its own defining characteristics. This Division is to show plants that idealize these defining characteristics.

Group N: C. nobilis

Group G: C. gardenii

Group C: C. caulescens

Group M: C. mirabilis

Group R: C. robusta

DIVISION 7: Foliage Inter-Specific Hybrids

Group X: (List Named Interspecific-Hybrids with distinct groups)

DIVISION 8: Berries and Seeds

Group BS: Berry Size

Group BC: Seed count from a single berry. (Berries to be opened at the time of judging by the judges.)

CATEGORY C – Creative Arts Floral Arrangements & Photography

DIVISION 1: Floral Arrangements

Floral arrangements must contain Clivia flowers, leaves, and/or seeds that dominate the arrangement.

DIVISION 2: Photography (maximum 3 entries across all groups per artist)

Group A: Full Umbel(s) (focus on at least one, full umbel)

Class 1: C. miniata

Class 2: Pendulous (all but C. miniata)

Class 3: Interspecifics

Class 4: Other (photographs not covered in the above classes)

Group B: Flower(s) (of any species – focus of photograph is flowers within an umbel)

Class 1: C. miniata

Class 2: Pendulous (all but C. miniata)

Class 3: Interspecifics

Class 4: Other (photographs not covered in the above classes)

Group C: Planting(s) (focus on the planting of clivia in the landscape/garden and/or pots)

Group D: Other (buds, berries, foliage, floral art, etc.)

The following rules apply to all entries in the Photography (Division 2), unless otherwise specified:

1. Each entry must have the associated, standard entry tag used for other entries in the show.
2. Each entry must feature Clivia(s) as the primary focus or design element, per the group and/or category description.
3. The visible portion of all photographs entered in Division 1 shall measure 8" x 10". Photographs shall be mounted on white colored mat board with a finished measurement no larger than 20" x 16" inches. Hangers may be attached to the back of the mat by the show committee. Any other form of display for photos, i.e. frames, acrylic covers, etc.) will not be accepted for entry in this category.
4. Show entries that do not meet these above mentioned requirements may be entered in non-judged, display only Category D, Class 2: Enthusiasts' Display. This includes all other works of art, including paintings and drawings.
5. Entries that are reproductions, copies, or incomplete, as well as those that require special handling or assembly will not be accepted for entry into the show into Category C. There will be no exceptions. These items shall not be entered into Category D, Class 2.

CATEGORY D - Juniors' and Enthusiasts' Displays

DIVISION 1: Juniors' Displays (Judged)

Any material entered by someone no older than 25 years of age. The intent of this category is to encourage younger exhibitors. Entries in this category are eligible for the 'People's Choice Award'. Pursuant to rule 7 of the General Show Rules, entries in this division may be further grouped or divided based upon the number of actual entries.

Group A: Youth (ages 12 and younger)

Class 1: Any Flowering Entry from Category A

Class 2: Any Foliage Entry from Category B

Class 3: Any Creative Arts Entry from Category C

Group B: Teenagers (ages 13 to 17)

Class 1: Any Flowering Entry from Category A

Class 2: Any Foliage Entry from Category B

Class 3: Any Creative Arts Entry from Category C

Group C: Young Adults (ages 18 to 25)

Class 1: Any Flowering Entry from Category A

Class 2: Any Foliage Entry from Category B

Class 3: Any Creative Arts Entry from Category C

DIVISION 2: Enthusiasts' Displays (Not Judged)

Plants and art objects displayed in this division will not be judged, although they will be eligible for the 'People's Choice Award'. The main purpose of this division is to encourage and provide a location for all clivia enthusiasts to share their favorite clivias and clivia-related items. As such, plants in this category DO NOT need to be extremely well-groomed or in excellent condition. All that is asked is that you do not bring highly bug infested or diseased plants. Non-plant entries should be of a manageable size and able to stand alone on an entry table.

SYSTEM OF AWARDS (Categories A, B, C & D)

Judging of each entry shall be done in accordance with the NACS Standards for Judging. Standards for judging include but are not limited to: Condition, Balance, Peduncle (Scape) Strength, Foliage Qualities, Umbel Symmetry, Flower Form, Flower Texture, Flower Color, Flower Patterning, Grooming, Presentation and Distinction (any unique qualities worthy of acknowledgement).

Prizes should be awarded wherever possible, only being withheld if the entry is very below standard. In the latter case awarding a second prize, rather than a first, is to be considered. Even a single entry should receive a first prize if the standard is satisfactory. Each entry (except from Category D, Division 2) is eligible for any of the following awards:

Honorable Mention Award (single light blue ribbon) may be awarded to the exhibits that have distinction; this does not exclude them from receiving any other award(s).

Third Place Award (single white ribbon) may be awarded to the exhibits scoring between 70% and 79% on the NACS Horticultural Scale of Points.

Second Place Award (single red ribbon) may be awarded to the exhibits scoring between 80% and 89% on the NACS Horticultural Scale of Points.

First Place Award (single blue ribbon) may be awarded to the exhibits scoring 90% or more on the NACS Horticultural Scale of Points.

Best in Class award (single light purple ribbon) may be awarded to the superior exhibit amongst the First Place awards within each class.

Best in Group award (single purple ribbon) may be awarded to the superior exhibit amongst the First Place awards within each group. (Minimum 20 ribbons.)

Best in Division Award (one purple rosette with purple center button that has three ribbons - white on the sides and purple in the middle) may be awarded to the superior exhibit amongst the Best in Group awards within that Division. (Maximum 16 Ribbons) **NOTE: In Division 23, the entry chosen as Best in Group U and Best in Group F will each get Best in Division Awards, i.e. "Best in Division Umbel" and "Best in Division Floret".**

Best in Category Award (One smaller white rosette between a larger red rosette and a red center button that has three ribbons – white on the sides and red in the middle) may be awarded to the superior exhibit amongst the Best in Division awards within a given Category. Category A, Division 23 (umbels and florets) and Category B, Division 8 (berries and seeds) are not eligible for this award. While entries in Category C are not eligible for this award, judged entries in Category D, i.e.- Division 1 – Juniors' Displays, are eligible for this award. (Maximum 3 ribbons.)

- At The Huntington Show, the Best in Category Flowering award is formally named the "Dave Conway Award" in honor of Dave Conway.
- At The Huntington Show, the Best in Category Foliage award is formally named the "Joe Solomone Award" in honor of Joe Solomone.

JUDGING STANDARDS FOR SHOW

1. Judging shall be performed by a panel comprised of two or more judges. The panel of judges shall be the final authority regarding any and all awards.
2. All judges should actively participate.
3. The panel shall follow the NACS Standards for Judging and the Judges Chair's directions.
4. All judges should refrain from judging any entry in which they may have any relationship that might be construed as interfering with their impartiality.
5. The Show Chair has the final authority and must agree to disqualify an entry that is diseased, infested, or does not conform to any other rules stated in the show schedule.
6. Judging shall be in accordance with the Schedule of Points and the Horticultural Scale of Points as described in this show schedule.

SCHEDULE OF POINTS

	Condition and Plant Balance	Foliage Qualities	Umbel Symmetry	Flower Form and Texture	Flower Color and Patterning	Grooming and Presentation
Category A: Flowering Plants	40	-	20	20	10	10
Division 23: Group U: Umbels	40	-	20	20	10	10
Division 23: Group F: Florets	20	-	-	40	20	20
Category B: Foliage Plants	40	50	-	-	-	10

HORTICULTURAL SCALE OF POINTS AWARDED FOR EACH ENTRY

Note: The vast majority of plants are entered by hobbyists. Therefore, judges are encouraged to focus on category features, i.e. florets and umbels in Category A and leaves in Category B. This means using the scale of points only when necessary.

Condition and Plant Balance: *(up to 20 points may be deducted for each)*

1. The plant base (trunk) should have no brown edges or spaces. Leaves should be free of brown spots and not chlorotic.
2. There should be a pleasing visual balance between inflorescence, peduncle, foliage and container (the plant should be growing straight upright in the pot.) Even if staked, the peduncle (scape) must appear sufficiently strong and upright to support the umbel. For cut peduncles (scape), emphasis will be placed on the overall balance of the peduncle (scape) and its strength and ability to support the umbel.

Foliage Qualities: *(up to 5 points may be deducted for each)*

1. Brightness refers to the degree of light reflecting from surface of the leaves.
2. Smoothness refers to the surface of leaves. It is clearly seen with a magnifying glass.
3. Rigidity refers to the bending strength of the whole leaf (longitudinal strength).
4. Thickness refers to a consistency of the thickness across the leaf (non-longitudinal strength).
5. Veins refer to the vascular structure of the leaves.
6. Color or colors should be clear and evenly distributed within their appropriate zones, according to their classification.
7. Leaf shape refers to the ratio of length to width.
8. Leaf arrangement refers to the symmetry and even distribution of the leaves.
9. Base shape refers to the symmetry plant base.
10. Leaf tips refer to uniformity at the ends of the leaves.

Umbel Symmetry: *(up to 5 points may be deducted for each)*

1. The umbel should be bilaterally symmetrical (i.e., no pedicel irregularities) when viewed from all sides. For the pendulous species a slight asymmetry is allowed, but this is not desirable for *C. miniata* and inter-specific hybrids.
2. Umbel should be well-filled but not overcrowded.
3. Flowers should be evenly distributed (i.e., no gaps or valleys)
4. At least 50% of the umbel should be fully opened with no more than 2 spent flowers.

Flower Form and Texture: *(up to 5 points may be deducted for each)*

1. There should be consistent fenestration (spacing between the tepals) within the flowers.
2. There should be consistency of flower form (i.e., no flower mutations) within the entire umbel.
3. Tepals should be bilaterally symmetrical.
4. Tepals should have a smooth surface (unless otherwise specified by their classification).

Flower Color and Patterning: *(up to 5 points may be deducted for each)*

1. The color or colors should be clear.
2. The color or colors should be evenly distributed or gradated within their appropriate zones, according to their classification.

HORTICULTURAL SCALE OF POINTS AWARDED FOR EACH ENTRY (CON'T)

Grooming and Presentation:

Note: NACS places the importance on the horticultural qualities of entered Clivia above the grooming and presentation.

1. All plant parts should appear undamaged when placed on the show floor. Allowances will be made for trimming or transport damage.
2. All plant parts should be clean and free of pests.
3. Bracts may be removed or left intact.
4. Anthers should be attached to their filament. However, umbels missing anthers should not be penalized.
5. Leaves may be trimmed to remove scarred or damaged tissue.
6. Leaves may not be waxed or shined.
7. An unnaturally colored plant base (trunk) resulting from the removal of old leaves is undesirable.
8. Ideally, the plant should be centered in the pot.
9. Pots should be cleaned to remove dirt and/or hard water deposits or placed in a pot cover.
10. The top dressing should be fresh with no other organisms present (moss, fungus, etc.).

Note: Within the rules governing entry, the type or style of pots and top dressings used for entries shall have no bearing on the presentation score, but may be considered in the event of an otherwise point tie.