

TO: Those Making Entries in the 2017 Huntington Show
FROM: Malcolm Shrimplin, Show Secretary and Classification Chair
DATE: Friday, January 10, 2017
RE: 2017 Entry Form and Entry Classification Reminder

Thank you again this year for taking time to groom and properly prepare your entries in advance of the 2017 show at The Huntington. Doing so makes the entry process go much more smoothly for all involved when you do so.

As you prepare your entries, please note the following:

- Entries will be accepted as follows:
 - 1:00 – 5:00 PM on Friday, March 18th
 - 8:00 – 10:00 AM on Saturday, March 19th
- Entries may be removed starting at 5:00PM on Sunday, March 19th.
- ***The classification system for this year's show has not been significantly updated from last year. However, please try to refer to a 2017 Show Program or the rules contained in this PDF file to help properly classify your plants for this year's show. (Please do not use a program from a prior years' show to classify your entries.)***
- All your entries must be recorded on the entry form on the next page. This includes entries in any of the three categories (A, B, & C), regardless of whether they are to be judged or not.
- You may make additional copies of the entry form, as necessary.
- The information on each line should also be included on the standard show entry tag and presented with the entry itself. Again, entries in any of the three categories must have an entry tag, regardless of whether they are to be judged or not.
- **PLEASE DO NOT NUMBER YOUR ENTRIES ON THE FORM OR THE TAGS.** Members of the show committee, including the classification and placement chair, will do that when you make your entries.
- If you have any questions about preparing your entries for the show, including needing forms or tags, please contact Malcolm Shrimplin at (480) 399-5388 or malcolm.shrimplin@me.com for help.

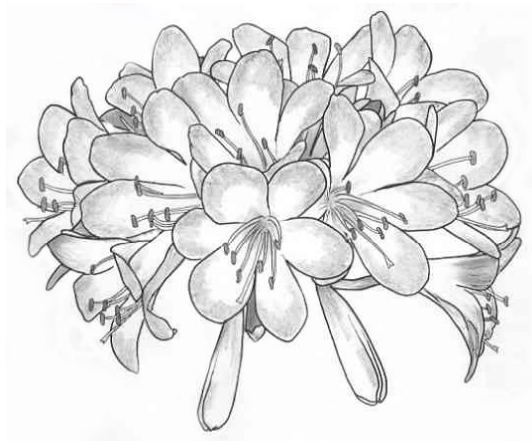
Show Entry Rules for

The 14th Annual Clivia Show and Sale

March 18 & 19, 2017

Sponsored by:

The Southern California Chapter of the North American Clivia Society (NACS) &
The Huntington Library, Art Collections, and Botanical Gardens



Location:

**The Botanical Center at
The Huntington Library, Art Collections, and Botanical Gardens
1151 Oxford Road
San Marino, California 91108**

The Show Open to The Public:

10:00 AM to 5:00 PM Saturday

10:00 AM to 5:00 PM Sunday

(Show & Sale admission is free with paid admission to The Huntington grounds.)

GENERAL SHOW RULES

1. The North American Clivia Society endeavors to educate the public regarding the genus Clivia. The emphases of this show are the horticultural aspects of Clivia plants. Presentation will play the essential part in breaking any ties that might occur.
2. There is no charge for exhibiting.
3. All entries will be **received** between the hours of **1:00 PM and 5:00 PM on Friday and 8:00 AM and 10:00 AM on Saturday**. Late entries, arriving after 10:00 AM on Saturday may be entered FOR DISPLAY ONLY and will not be judged. (Exceptions to this rule shall only be granted by The Show Chair.) No entry may be **removed** before **5:00 PM on Sunday** when the Clivia Show closes.
4. Judging will begin promptly at **2:00 PM on Saturday** while the show is open to the public. Only the Judges Chair and Show Chair shall interact with the Judges and Stewards during this time.
5. Show officials will exercise all possible precautions for protecting exhibits. However, neither they nor The Huntington will be responsible for any loss or damage that may occur. All personal property (e.g.: containers and accessories) should be marked with the name of the exhibitor. Entries should be marked on the bottom of the pot or in another manner not easily identifiable during judging.
6. Every entry must have an accompanying entry tag in order to be judged. Names, numbers or any other marks identifying the exhibitor are not permitted on the visible portion of the entry tag, pot or plant tag. Please note that this rule applies to every entry in the show, even non-judged entries.
7. Classification of entries in their respective categories, divisions and groups is at the discretion of the exhibitor with advice and consent of The Classification Chair. The Classification Chair and Judges Chair (or their authorized representatives) have the authority to re-classify an entry at any time. However, at the authorization of the Judges Chair, the panel of judges has the right to reclassify entries to other sections or groups as deemed appropriate. The judges' panel must make sure that entry tags are corrected for reclassified entries.
8. The color classes include idealized colors not only from The Royal Horticultural Society Color Chart (RHS), but also from the Clivia Color Chart I (CCC1) and Clivia Color Chart II (CCC2). Each class first lists the RHS color identifier, second, the Clivia Color Chart I identifier, and, third, the Clivia Color Chart II identifier. Each is separated by a semicolon (;). For example:

Class 3: Orange Colors (RHS 24 to 29) Idealized Color (N25B; OR6; 3-26)

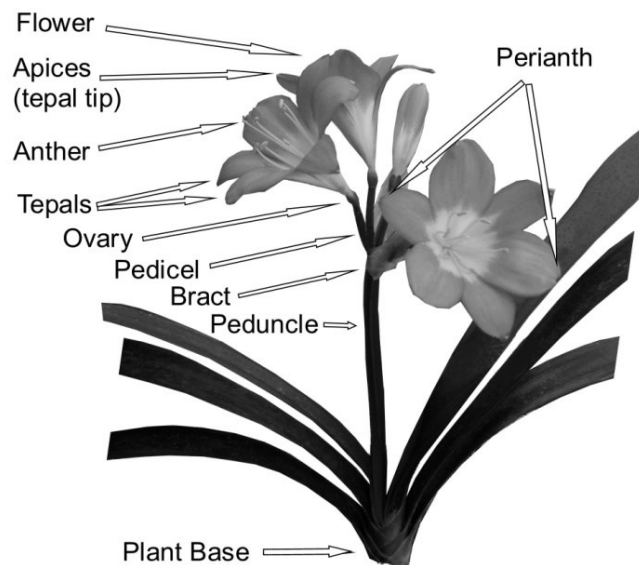
N25B is from the RHS chart. OR 6 is from the Clivia Color Chart I. 3-26 is from the Clivia Color Chart II. An "N/A" indicates that no color was available from a particular chart. Final decisions on flower color made by The Classification Chair (for show entry classification purposes) will be made based upon the RHS color chart range that directly follows the class name. From the above example, that would be RHS 24 to 29.
9. Only the Placement Chair, Stewards and Show Chair will be permitted to physically move any of the entries once placed onto the show floor.
10. An exhibitor attempting to influence any of the judges in any way shall have all of his or her entries disqualified by the Judge's Chair in consultation with the Show Chair.
11. No plant material (i.e. pollen, etc.) may be exchanged at the show.

HORTICULTURAL RULES

1. Exhibition is open to all. Entries must have been grown (for at least 6 months) by the named exhibitors. Entries should be groomed and actually physically entered by the exhibitors (or their representatives). Materials exhibited in Category A, Division 24 (Floral Arrangements) are exempt from this rule as it relates to the growing of the plant materials used in the display.
2. All entries in Category A Division 1 thru 22 (Blooming Plants) must have Peduncles (scapes) still attached to the original plant. Peduncles severed from the plant may be entered as umbels in Division 23, Group U. Pedicels (florets) severed from the peduncle may be entered as Flowers in Division 23, Group F.
3. Grooming is the responsibility of the exhibitors or their representatives. A grooming station will be available during entry. However, ***it is strongly recommended that all plants be groomed prior to arriving at the show.***
4. Fruits may be covered with a sleeve, netting or other device for their protection which will not result in scoring deductions by the panel of judges.
5. Artificial enhancement of the appearance (excessive trimming, leaf waxes, dyes, etc) is undesirable and may result in significant point deductions or disqualification. Materials exhibited in Category A Division 24 (Floral Arrangements) are exempt from this rule.
6. Plants exhibiting viral infection or active insect infestations shall be disqualified and removed from the show area.

This Show is comprised of three main competitive categories:

1. Blooming Plants (Category A)
2. Foliage Plants (Category B)
3. Creative Arts (Category C)



CATEGORY A - FLOWERING
Blooming Plants, Cut Peduncles (Umbels), and
Cut Pedicels (Flowers)

DIVISION 1: Blooming C. miniata

Classes within any division may be further subdivided into sub-classes (e.g., based on flower type, size, tepal length/width or flower openness, etc.) by a consensus decision of the Judges, Classification and Placement Chairs, depending on the number of entries in each class.

Group NV: Non-Variegated Leaves **or** **Group V:** Variegated Leaves

Class 1: Yellow Colors (RHS 2 to 13) Idealized Color (RHS 12A; CCC1 YG4; CCC2 9-88)

Class 2: Yellow-Orange Colors (RHS 14 to 23) Idealized Color (17B; N/A; N/A)

Class 3: Orange Colors (RHS 24 to 29) Idealized Color (N25B; OR6; 3-26)

Class 4: Orange-Red Colors (RHS 30 to 35) Idealized Color (N30A; OR 3; 2-11)

Class 5: Red Colors (RHS 36 to 56) Idealized Color (46B; OR 1; 1-3)

Class 10: All Other Solid/Non-Patterned/Non-Pastel Colors (which do not have their own Class listed) (Greens, etc.)

Class 11: Yellow Pastel Colors Creams (11D; YG1; 6-57)

Class 12: Yellow-Orange Pastel Colors Apricots (18B and 19C; D8; 8-75)

Class 13: Orange Pastel Colors Peaches (24D and 25C; OR 7; 7-68)

Class 14: Orange-Red Pastel Colors Salmons (32D; D6; 4-32)

Class 15: Red Pastel Colors Pink Shades (38A, 38D and 39D; D1; 5-48)

Class 20: All Other Solid/ Non-Patterned Pastel Colors (which do not have their own Class listed)

Class 30: All Green Throats (which do not have their own Class listed) (Peaches, Reds, Other Bronzes, etc.)

Class 40: All Patterned/ Non-Solid Colors (which do not have their own Class listed) (Large Throats, Banded, Edged, 'Party Color' (Conway), 'Ghost' (Nakamura), 'Water Colors' (Solomone), 'White Lips' (Floreac), Picotee, Bi-Color, Tri-Color, etc.)

Class 50: All Unusual Flower Forms (which do not have their own Class listed) (Forms include Spiders, Keeled, Quilled, Multi-Tepaled, Dwarf, Miniature, Spatulated, etc.)

Class 60: First Flowering Seedlings

DIVISION 10: Blooming Non-C. miniata Species

Group N: C. nobilis

Group G: C. gardenii

Group C: C. caulescens

Group M: C. mirabilis

Group R: C. robusta

Class 1: Yellow Colors (RHS 2 to 13) Idealized Color (RHS 12A; CCC1 YG4; CCC2 9-88)

Class 2: Yellow-Orange Colors (RHS 14 to 23) Idealized Color (17B; N/A; N/A)

Class 3: Orange Colors (RHS 24 to 29) Idealized Color (N25B; OR6; 3-26)

Class 4: Orange-Red Colors (RHS 30 to 35) Idealized Color (N30A; OR 3; 2-11)

Class 5: Red Colors (RHS 36 to 56) Idealized Color (46B; OR 1; 1-3)

Class 10: All Other Solid/Non-Patterned/Non-Pastel Colors (which do not have their own Class listed) (Greens, etc.)

Class 11: Yellow Pastel Colors Creams (11D; YG1; 6-57)

Class 12: Yellow-Orange Pastel Colors Apricots (18B and 19C; D8; 8-75)

Class 13: Orange Pastel Colors Peaches (24D and 25C; OR 7; 7-68)

Class 14: Orange-Red Pastel Colors Salmons (32D; D6; 4-32)

Class 15: Red Pastel Colors Pink Shades (38A, 38D and 39D; D1; 5-48)

Class 20: All Other Solid/ Non-Patterned Pastel Colors (which do not have their own Class listed)

Class 30: All Green Throats (which do not have their own Class listed) (Peaches, Reds, Other Bronzes, etc.)

Class 40: All Patterned/ Non-Solid Colors (which do not have their own Class listed) (Large Throats, Banded, Edged, 'Party Color' (Conway), 'Ghost' (Nakamura), 'Water Colors' (Solomone), 'White Lips' (Floreac), Picotee, Bi-Color, Tri-Color, etc.)

Class 50: All Unusual Flower Forms (which do not have their own Class listed) (Forms include Spiders, Keeled, Quilled, Multi-Tepaled, Dwarf, Miniature, Spatulated, etc.)

Class 60: First Flowering Seedlings

DIVISION 20: All Blooming Inter-Specific Hybrids

Group X: (All Known Named Interspecific-Hybrids with distinct groups)

Class 1: Yellow Colors (RHS 2 to 13) Idealized Color (RHS 12A; CCC1 YG4; CCC2 9-88)

Class 2: Yellow-Orange Colors (RHS 14 to 23) Idealized Color (17B; N/A; N/A)

Class 3: Orange Colors (RHS 24 to 29) Idealized Color (N25B; OR6; 3-26)

Class 4: Orange-Red Colors (RHS 30 to 35) Idealized Color (N30A; OR 3; 2-11)

Class 5: Red Colors (RHS 36 to 56) Idealized Color (46B; OR 1; 1-3)

Class 10: All Other Solid/Non-Patterned/Non-Pastel Colors (which do not have their own Class listed) (Greens, etc.)

Class 11: Yellow Pastel Colors Creams (11D; YG1; 6-57)

Class 12: Yellow-Orange Pastel Colors Apricots (18B and 19C; D8; 8-75)

Class 13: Orange Pastel Colors Peaches (24D and 25C; OR 7; 7-68)

Class 14: Orange-Red Pastel Colors Salmons (32D; D6; 4-32)

Class 15: Red Pastel Colors Pink Shades (38A, 38D and 39D; D1; 5-48)

Class 20: All Other Solid/ Non-Patterned Pastel Colors (which do not have their own Class listed)

Class 30: All Green Throats (which do not have their own Class listed) (Peaches, Reds, Other Bronzes, etc.)

Class 40: All Patterned/ Non-Solid Colors (which do not have their own Class listed) (Large Throats, Banded, Edged, 'Party Color' (Conway), 'Ghost' (Nakamura), 'Water Colors' (Solomone), 'White Lips' (Floreac), Picotee, Bi-Color, Tri-Color, etc.)

Class 50: All Unusual Flower Forms (which do not have their own Class listed) (Forms include Spiders, Keeled, Quilled, Multi-Tepaled, Dwarf, Miniature, Spatulated, etc.)

Class 60: First Flowering Seedlings

DIVISION 21: Enthusiasts' Display

Plants and art objects displayed in this division will not be judged, although they will be eligible for the 'People's Choice Award'. The main purpose of this division is to encourage and provide a location for all clivia enthusiasts to share their favorite clivias and clivia-related items. As such, plants in this category DO NOT need to be extremely well-groomed or in excellent condition. All that is asked is that you do not bring highly bug infested or diseased plants. Non-plant entries should be of a manageable size and able to stand alone on an entry table.

DIVISION 22: Display Plants

In order to qualify as a specimen, plants must possess a minimum of 3 mature growths and have a minimum of 2 peduncles (scapes) on attached offsets. At least two umbels must have a minimum of 50% of the florets opened.

Group NV: Non-Variegated Leaves or Group V: Variegated Leaves

Class 1: Yellow Colors (RHS 2 to 13) Idealized Color (RHS 12A; CCC1 YG4; CCC2 9-88)

Class 2: Yellow-Orange Colors (RHS 14 to 23) Idealized Color (17B; N/A; N/A)

Class 3: Orange Colors (RHS 24 to 29) Idealized Color (N25B; OR6; 3-26)

Class 4: Orange-Red Colors (RHS 30 to 35) Idealized Color (N30A; OR 3; 2-11)

Class 5: Red Colors (RHS 36 to 56) Idealized Color (46B; OR 1; 1-3)

Class 10: All Other Solid/Non-Patterned/Non-Pastel Colors (which do not have their own Class listed) (Greens, etc.)

Class 11: Yellow Pastel Colors Creams (11D; YG1; 6-57)

Class 12: Yellow-Orange Pastel Colors Apricots (18B and 19C; D8; 8-75)

Class 13: Orange Pastel Colors Peaches (24D and 25C; OR 7; 7-68)

Class 14: Orange-Red Pastel Colors Salmons (32D; D6; 4-32)

Class 15: Red Pastel Colors Pink Shades (38A, 38D and 39D; D1; 5-48)

Class 20: All Other Solid/ Non-Patterned Pastel Colors (which do not have their own Class listed)

Class 30: All Green Throats (which do not have their own Class listed) (Peaches, Reds, Other Bronzes, etc.)

Class 40: All Patterned/ Non-Solid Colors (which do not have their own Class listed) (Large Throats, Banded, Edged, 'Party Color' (Conway), 'Ghost' (Nakamura), 'Water Colors' (Solomone), 'White Lips' (Floreac), Picotee, Bi-Color, Tri-Color, etc.)

Class 50: All Unusual Flower Forms (which do not have their own Class listed) (Forms include Spiders, Keeled, Quilled, Multi-Tepaled, Dwarf, Miniature, Spatulated, etc.)

DIVISION 23: Blooms*

Group U: Cut Peduncles (i.e. Umbels)

Group F: Cut Pedicels (i.e. Florets)

Class 1: Yellow Colors (RHS 2 to 13) Idealized Color (RHS 12A; CCC1 YG4; CCC2 9-88)

Class 2: Yellow-Orange Colors (RHS 14 to 23) Idealized Color (17B; N/A; N/A)

Class 3: Orange Colors (RHS 24 to 29) Idealized Color (N25B; OR6; 3-26)

Class 4: Orange-Red Colors (RHS 30 to 35) Idealized Color (N30A; OR 3; 2-11)

Class 5: Red Colors (RHS 36 to 56) Idealized Color (46B; OR 1; 1-3)

Class 10: All Other Solid/Non-Patterned/Non-Pastel Colors (which do not have their own Class listed) (Greens, etc.)

Class 11: Yellow Pastel Colors Creams (11D; YG1; 6-57)

Class 12: Yellow-Orange Pastel Colors Apricots (18B and 19C; D8; 8-75)

Class 13: Orange Pastel Colors Peaches (24D and 25C; OR 7; 7-68)

Class 14: Orange-Red Pastel Colors Salmons (32D; D6; 4-32)

Class 15: Red Pastel Colors Pink Shades (38A, 38D and 39D; D1; 5-48)

Class 20: All Other Solid/ Non-Patterned Pastel Colors (which do not have their own Class listed)

Class 30: All Green Throats (which do not have their own Class listed) (Peaches, Reds, Other Bronzes, etc.)

Class 40: All Patterned/ Non-Solid Colors (which do not have their own Class listed) (Large Throats, Banded, Edged, 'Party Color' (Conway), 'Ghost' (Nakamura), 'Water Colors' (Solomone), 'White Lips' (Floreac), Picotee, Bi-Color, Tri-Color, etc.)

Class 50: All Unusual Flower Forms (which do not have their own Class listed) (Forms include Spiders, Keeled, Quilled, Multi-Tepaled, Dwarf, Miniature, Spatulated, etc.)

Class 60: First Flowering Seedlings

** Vases and cut flower tubes will be provided during the exhibit entry.*

DIVISION 24: Floral Arrangements

The floral arrangements must contain either Clivia flowers and/or leaves that dominate the arrangement.

CATEGORY B - FOLIAGE

Foliage Plants (may be in flower or fruit)

DIVISION 1: Non-Variegated (Classified by leaf width and then length.)

Group A: Narrow Leaves Less than 37.5mm (about 1.5 inches)

Sub-Group a: Dwarf - Less than 200mm (about 8 inches) in length.

Sub-Group b: Small - Between 200mm (about 8 inches) and 400mm (about 16 inches) in length.

Sub-Group c: Medium - Between 400mm (about 16 inches) and 800mm (about 32 inches) in length.

Sub-Group d: Large - Between 800mm (about 32 inches) and 1200mm (about 4 feet) in length.

Sub-Group e: Giant - Greater than 1200mm (about 4 feet) in length.

Sub-Group f: All Leaf Lengths (which do not have their own Sub-Group listed)

Group B: Standard Leaves Between 37.5mm (about 1.5 inches) and 75mm (about 3 inches)

Sub-Group a: Dwarf - Less than 200mm (about 8 inches) in length.

Sub-Group b: Small - Between 200mm (about 8 inches) and 400mm (about 16 inches) in length.

Sub-Group c: Medium - Between 400mm (about 16 inches) and 800mm (about 32 inches) in length.

Sub-Group d: Large - Between 800mm (about 32 inches) and 1200mm (about 4 feet) in length.

Sub-Group e: Giant - Greater than 1200mm (about 4 feet) in length.

Sub-Group f: All Leaf Lengths (which do not have their own Sub-Group listed)

Group C: Broad Leaves Greater than 75mm (about 3 inches)

Sub-Group a: Dwarf - Less than 200mm (about 8 inches) in length.

Class 1:

Leaf length 120 mm (5 inches)

Leaf width 110 – 120 mm (<5 inches)

Ideal leaf length to width ratio is 1:1 to 1.5:1

Class 10: All Others

Sub-Group b: Small - Between 200mm (about 8 inches) and 400mm (about 16 inches) in length.

Class 1:

Leaf length 300 – 500 mm (12 to 20 inches)

Leaf width 90 – 110 mm (about 4 inches)

Ideal leaf length to width ratio is 3:1 to 5:1

Class 2:

Leaf length 300 – 350 mm (12 to 14 inches)

Leaf width 120 – 130 mm (about 5 inches)

Ideal leaf length to width ratio is 1:1 to 1:1.5

Bright leaves with clear ridged and thick veins

Class 3:

Leaf length 200 – 300 mm (8 to 12 inches)

Leaf width 90 – 150 mm (4 to 6 inches)

Ideal leaf length to width ratio is 1.5:1 to 2.5:1

Class 10: All Others

Sub-Group c: Medium - Between 400mm (about 16 inches) and 800mm (about 32 inches) in length.

Sub-Group d: Large - Between 800mm (about 32 inches) and 1200mm (about 4 feet) in length.

Sub-Group e: Giant - Greater than 1200mm (about 4 feet) in length.

Sub-Group f: All Leaf Lengths (which do not have their own Sub-Group listed)

DIVISION 2: Longitudinal Variegation

Variegation is the presence of two or more lines running from base to tip of leaf, often displayed in a regular pattern. The colors may be silver, white, grey, cream, light green, green, dark green, blue green and/or red.

Group A: Narrow Leaves Less than 37.5mm (about 1.5 inches)

Sub-Group a: Dwarf - Less than 200mm (about 8 inches) in length.

Sub-Group b: Small - Between 200mm (about 8 inches) and 400mm (about 16 inches) in length.

Sub-Group c: Medium - Between 400mm (about 16 inches) and 800mm (about 32 inches) in length.

Sub-Group d: Large - Between 800mm (about 32 inches) and 1200mm (about 4 feet) in length.

Sub-Group e: Giant - Greater than 1200mm (about 4 feet) in length.

Sub-Group f: All Leaf Lengths (which do not have their own Sub-Group listed)

Class 1: Striped

Leaves which have many narrow, continuous lines running from base to tip of leaf.

Sub-Class a: Rainbow

A prefix stating the number of different colors present is common.

Sub-Class b: Golden Threads

The two colors must have a ratio of 1:1; each color must be clear.

Class 2: Marginal

Leaves which have broad light bands along both leaf margins.

Class 3: Median

Leaves which have a band running along the mid-line from base to tip of leaf.

Class 4: Mandarin Duck

Leaves which are divided lengthwise into two equal parts, one half white or cream and the other half green.

Group B: Standard Leaves Between 37.5mm (about 1.5 inches) and 75mm (about 3 inches)

Sub-Group a: Dwarf - Less than 200mm (about 8 inches) in length.

Sub-Group b: Small - Between 200mm (about 8 inches) and 400mm (about 16 inches) in length.

Sub-Group c: Medium - Between 400mm (about 16 inches) and 800mm (about 32 inches) in length.

Sub-Group d: Large - Between 800mm (about 32 inches) and 1200mm (about 4 feet) in length.

Sub-Group e: Giant - Greater than 1200mm (about 4 feet) in length.

Sub-Group f: All Leaf Lengths (which do not have their own Sub-Group listed)

Class 1: Striped

Leaves which have many narrow, continuous lines running from base to tip of leaf.

Sub-Class a: Rainbow

A prefix stating the number of different colors present is common.

Sub-Class b: Golden Threads

The two colors must have a ratio of 1:1; each color must be clear.

Class 2: Marginal

Leaves which have broad light bands along both leaf margins.

Class 3: Median

Leaves which have a band running along the mid-line from base to tip of leaf.

Class 4: Mandarin Duck

Leaves which are divided lengthwise into two equal parts, one half white or cream and the other half green.

Group C: Broad Leaves Greater than 75mm (about 3 inches)

Sub-Group a: Dwarf - Less than 200mm (about 8 inches) in length.

Sub-Group b: Small - Between 200mm (about 8 inches) and 400mm (about 16 inches) in length.

Sub-Group c: Medium - Between 400mm (about 16 inches) and 800mm (about 32 inches) in length.

Sub-Group d: Large - Between 800mm (about 32 inches) and 1200mm (about 4 feet) in length.

Sub-Group e: Giant - Greater than 1200mm (about 4 feet) in length.

Sub-Group f: All Leaf Lengths (which do not have their own Sub-Group listed)

Class 1: Striped

Leaves which have many narrow, continuous lines running from base to tip of leaf.

Sub-Class a: Rainbow

A prefix stating the number of different colors present is common.

Sub-Class b: Golden Threads

The two colors must have a ratio of 1:1; each color must be clear.

Class 2: Marginal

Leaves which have broad light bands along both leaf margins.

Class 3: Median

Leaves which have a band running along the mid-line from base to tip of leaf.

Class 4: Mandarin Duck

Leaves which are divided lengthwise into two equal parts, one half white or cream and the other half green.

DIVISION 3: Non-Longitudinal Variegation

Group A: Narrow Leaves Less than 37.5mm (about 1.5 inches)

Sub-Group a: Dwarf - Less than 200mm (about 8 inches) in length.

Sub-Group b: Small - Between 200mm (about 8 inches) and 400mm (about 16 inches) in length.

Sub-Group c: Medium - Between 400mm (about 16 inches) and 800mm (about 32 inches) in length.

Sub-Group d: Large - Between 800mm (about 32 inches) and 1200mm (about 4 feet) in length.

Sub-Group e: Giant - Greater than 1200mm (about 4 feet) in length.

Sub-Group f: All Leaf Lengths (which do not have their own Sub-Group listed)

Class 1: Light of Buddha

Leaves should have non-distinct horizontal white or yellow areas or blotches on an otherwise green leaf.

Class 2: Akebono

Leaves should have distinct horizontal white or yellow bands on an otherwise green leaf.

Class 3: Broken Strings

Leaves which have very thin sometimes broken string-like lines that run lengthwise through the leaves.

Class 4: Tiger

Leaves that have distinct light green horizontal bands the entire length of the leaf.

Class 10: All Other Non-Longitudinal Variegation (Viridescent, Moonlight, False Tiger)

Class 11: Tessellated or "Painted Face"

Leaf veins should be dark green and the spaces between should be distinctly lighter and translucent presenting noticeable contrast.

Group B: Standard Leaves Between 37.5mm (about 1.5 inches) and 75mm (about 3 inches)

Sub-Group a: Dwarf - Less than 200mm (about 8 inches) in length.

Sub-Group b: Small - Between 200mm (about 8 inches) and 400mm (about 16 inches) in length.

Sub-Group c: Medium - Between 400mm (about 16 inches) and 800mm (about 32 inches) in length.

Sub-Group d: Large - Between 800mm (about 32 inches) and 1200mm (about 4 feet) in length.

Sub-Group e: Giant - Greater than 1200mm (about 4 feet) in length.

Sub-Group f: All Leaf Lengths (which do not have their own Sub-Group listed)

Class 1: Light of Buddha

Leaves should have non-distinct horizontal white or yellow areas or blotches on an otherwise green leaf.

Class 2: Akebono

Leaves should have distinct horizontal white or yellow bands on an otherwise green leaf.

Class 3: Broken Strings

Leaves which have very thin sometimes broken string-like lines that run lengthwise through the leaves.

Class 4: Tiger

Leaves that have distinct light green horizontal bands the entire length of the leaf.

Class 10: All Other Non-Longitudinal Variegation (Viridescent, Moonlight, False Tiger)

Class 11: Tessellated or "Painted Face"

Leaf veins should be dark green and the spaces between should be distinctly lighter and translucent presenting noticeable contrast.

Group C: Broad Leaves Greater than 75mm (about 3 inches)

Sub-Group a: Dwarf - Less than 200mm (about 8 inches) in length.

Sub-Group b: Small - Between 200mm (about 8 inches) and 400mm (about 16 inches) in length.

Sub-Group c: Medium - Between 400mm (about 16 inches) and 800mm (about 32 inches) in length.

Sub-Group d: Large - Between 800mm (about 32 inches) and 1200mm (about 4 feet) in length.

Sub-Group e: Giant - Greater than 1200mm (about 4 feet) in length.

Sub-Group f: All Leaf Lengths (which do not have their own Sub-Group listed)

Class 1: Light of Buddha

Leaves should have non-distinct horizontal white or yellow areas or blotches on an otherwise green leaf.

Class 2: Akebono

Leaves should have distinct horizontal white or yellow bands on an otherwise green leaf.

Class 3: Broken Strings

Leaves which have very thin sometimes broken string-like lines that run lengthwise through the leaves.

Class 4: Tiger

Leaves that have distinct light green horizontal bands the entire length of the leaf.

Class 10: All Other Non-Longitudinal Variegation (Viridescent, Moonlight, False Tiger)

Class 11: Tessellated or "Painted Face"

Leaf veins should be dark green and the spaces between should be distinctly lighter and translucent presenting noticeable contrast.

Group D: All Leaf Widths (which do not have their own Group listed)

Sub-Group a: Dwarf - Less than 200mm (about 8 inches) in length.

Sub-Group b: Small - Between 200mm (about 8 inches) and 400mm (about 16 inches) in length.

Sub-Group c: Medium - Between 400mm (about 16 inches) and 800mm (about 32 inches) in length.

Sub-Group d: Large - Between 800mm (about 32 inches) and 1200mm (about 4 feet) in length.

Sub-Group e: Giant - Greater than 1200mm (about 4 feet) in length.

Sub-Group f: All Leaf Lengths (which do not have their own Sub-Group listed)

Class 1: Light of Buddha

Leaves should have non-distinct horizontal white or yellow areas or blotches on an otherwise green leaf.

Class 2: Akebono

Leaves should have distinct horizontal white or yellow bands on an otherwise green leaf.

Class 3: Broken Strings

Leaves which have very thin sometimes broken string-like lines that run lengthwise through the leaves.

Class 4: Tiger

Leaves that have distinct light green horizontal bands the entire length of the leaf.

Class 10: All Other Non-Longitudinal Variegation (Viridescent, Moonlight, False Tiger)

Class 11: Tessellated or "Painted Face"

Leaf veins should be dark green and the spaces between should be distinctly lighter and translucent presenting noticeable contrast.

DIVISION 4: Textured Foliage Forms/Habits

Group A: Narrow Leaves Less than 37.5mm (about 1.5 inches)

Sub-Group a: Dwarf - Less than 200mm (about 8 inches) in length.

Sub-Group b: Small - Between 200mm (about 8 inches) and 400mm (about 16 inches) in length.

Sub-Group c: Medium - Between 400mm (about 16 inches) and 800mm (about 32 inches) in length.

Sub-Group d: Large - Between 800mm (about 32 inches) and 1200mm (about 4 feet) in length.

Sub-Group e: Giant - Greater than 1200mm (about 4 feet) in length.

Sub-Group f: All Leaf Lengths (which do not have their own Sub-Group listed)

Class 1: Bullate (Dragon Skin)

Leaves which have a checkerboard placement of raised areas (convex) between the veins, distributed across the entire leaf.

Class 2: Venation (Waffle Pattern)

The raised veins form square-like patterns (concave) which are distributed across the entire leaf.

Class 3: Tiger Textured

Leaves which have raised bands reminiscent of the brindled stripes of a tiger.

Class 10: All Other Textured Foliage (fluted, pleated, plisse)

Group B: Standard Leaves Between 37.5mm (about 1.5 inches) and 75mm (about 3 inches)

Sub-Group a: Dwarf - Less than 200mm (about 8 inches) in length.

Sub-Group b: Small - Between 200mm (about 8 inches) and 400mm (about 16 inches) in length.

Sub-Group c: Medium - Between 400mm (about 16 inches) and 800mm (about 32 inches) in length.

Sub-Group d: Large - Between 800mm (about 32 inches) and 1200mm (about 4 feet) in length.

Sub-Group e: Giant - Greater than 1200mm (about 4 feet) in length.

Sub-Group f: All Leaf Lengths (which do not have their own Sub-Group listed)

Class 1: Bullate (Dragon Skin)

Leaves which have a checkerboard placement of raised areas (convex) between the veins, distributed across the entire leaf.

Class 2: Venation (Waffle Pattern)

The raised veins form square-like patterns (concave) which are distributed across the entire leaf.

Class 3: Tiger Textured

Leaves which have raised bands reminiscent of the brindled stripes of a tiger.

Class 10: All Other Textured Foliage (fluted, pleated, plisse)

Group C: Broad Leaves Greater than 75mm (about 3 inches)

Sub-Group a: Dwarf - Less than 200mm (about 8 inches) in length.

Sub-Group b: Small - Between 200mm (about 8 inches) and 400mm (about 16 inches) in length.

Sub-Group c: Medium - Between 400mm (about 16 inches) and 800mm (about 32 inches) in length.

Sub-Group d: Large - Between 800mm (about 32 inches) and 1200mm (about 4 feet) in length.

Sub-Group e: Giant - Greater than 1200mm (about 4 feet) in length.

Sub-Group f: All Leaf Lengths (which do not have their own Sub-Group listed)

Class 1: Bullate (Dragon Skin)

Leaves which have a checkerboard placement of raised areas (convex) between the veins, distributed across the entire leaf.

Class 2: Venation (Waffle Pattern)

The raised veins form square-like patterns (concave) which are distributed across the entire leaf.

Class 3: Tiger Textured

Leaves which have raised bands reminiscent of the brindled stripes of a tiger.

Class 10: All Other Textured Foliage (fluted, pleated, plisse)

Group D: All Leaf Widths (which do not have their own Group listed)

Sub-Group a: Dwarf - Less than 200mm (about 8 inches) in length.

Sub-Group b: Small - Between 200mm (about 8 inches) and 400mm (about 16 inches) in length.

Sub-Group c: Medium - Between 400mm (about 16 inches) and 800mm (about 32 inches) in length.

Sub-Group d: Large - Between 800mm (about 32 inches) and 1200mm (about 4 feet) in length.

Sub-Group e: Giant - Greater than 1200mm (about 4 feet) in length.

Sub-Group f: All Leaf Lengths (which do not have their own Sub-Group listed)

Class 1: Bullate (Dragon Skin)

Leaves which have a checkerboard placement of raised areas (convex) between the veins, distributed across the entire leaf.

Class 2: Venation (Waffle Pattern)

The raised veins form square-like patterns (concave) which are distributed across the entire leaf.

Class 3: Tiger Textured

Leaves which have raised bands reminiscent of the brindled stripes of a tiger.

Class 10: All Other Textured Foliage (fluted, pleated, plisse)

DIVISION 5: Foliage Display Plants

Group F: Specimen Plants

In order to qualify as a specimen, plants must possess a minimum of 3 mature (blooming size) growths all from the same clone. Specimens may be hybrids or species.

DIVISION 6: Foliage Non-C. Miniata Species

Each species has its own defining characteristics. This Division is to show plants that idealize these defining characteristics.

Group N: C. nobilis

Group G: C. gardenii

Group C: C. caulescens

Group M: C. mirabilis

Group R: C. robusta

DIVISION 7: Foliage Inter-Specific Hybrids

Group X: (List Named Interspecific-Hybrids with distinct groups)

DIVISION 8: Berries and Seeds

Group BS: Berry Size

Group BC: Seed count from a single berry. (Berries to be opened at the time of judging by the judges.)

CATEGORY C

Creative Arts: Photography

DIVISION 1: Photography (maximum 3 entries per artist)

The following rules apply to all divisions in this category, unless otherwise specified:

1. Each entry must have the associated, standard entry tag used for other entries in the show.
2. Each entry must feature Clivia(s) as the primary focus or design element.
3. The visible portion of all photographs entered in Division 1 shall measure 8" x 10". Photographs shall be mounted on white colored mat board with a finished measurement no larger than 20" x 16" inches. Hangers may be attached to the back of the mat by the show committee. Any other form of display for photos, i.e. frames, acrylic covers, etc.) will not be accepted for entry into Division 1.
4. Show entries that do not meet these above mentioned requirements may be entered in non judged, display only Category A, Class 21: Enthusiasts' Display. This includes all other works of art, including paintings and drawings.
5. Entries that are reproductions, copies, or incomplete, as well as those that require special handling or assembly will not be accepted for entry into the show into Category C. There will be no exceptions. These items shall not be entered into Category A, Class 21.

SYSTEM OF AWARDS (Categories A & B)

Judging of each entry shall be done in accordance with the NACS Standards for Judging. Standards for judging include but are not limited to: Condition, Balance, Peduncle (Scape) Strength, Foliage Qualities, Umbel Symmetry, Flower Form, Flower Texture, Flower Color, Flower Patterning, Grooming, Presentation and Distinction (any unique qualities worthy of acknowledgement).

Prizes should be awarded wherever possible, only being withheld if the entry is very below standard. In the latter case awarding a second prize, rather than a first, is to be considered. Even a single entry should receive a first prize if the standard is satisfactory. Each entry (except from Category A Division 21) is eligible for any of the following awards:

Honorable Mention award (Light Blue Ribbon) may be awarded to the exhibits that have distinction; this does not exclude them from receiving any other award(s).

Third Place award (White Ribbon) may be awarded to the exhibits scoring between 70% and 79% on the NACS Horticultural Scale of Points.

Second Place award (Red Ribbon) may be awarded to the exhibits scoring between 80% and 89% on the NACS Horticultural Scale of Points.

First Place award (Blue Ribbon) may be awarded to the exhibits scoring 90% or more on the NACS Horticultural Scale of Points.

Best in Class award (Light Purple Ribbon) may be awarded to the superior exhibit amongst the First Place awards within each class.

Best in Group award (Purple Ribbon) may be awarded to the superior exhibit amongst the First Place awards within each group.

Best in Division award (Purple Rosette with Three Ribbons - white on the sides and purple in the middle) may be awarded to the superior exhibit amongst the Best in Group awards within that Division. (20 Rosettes) ***NOTE: In Division 23, the entry chosen as Best in Group U and Best in Group F will each get Best in Division Awards, i.e. "Best in Division Umbel" and "Best in Division Floret".***

Best in Category award (Red and White Rosette with Two Ribbons [Red and White]) may be awarded to the superior exhibit amongst the Best in Division awards within that Category. Category A Divisions 22, 23, 24 and Category B Division 5,6,7,8 are not eligible for this award. (2 Rosettes)

- The Best in Category Flowering award is formally named the "Dave Conway Award" in honor of Dave Conway.
- The Best in Category Foliage award is formally named the "Joe Solomone Award" in honor of Joe Solomone.

JUDGING STANDARDS FOR SHOW

1. Judging shall be performed by a panel comprised of two or more judges. The panel of judges shall be the final authority regarding any and all awards.
2. All judges should actively participate.
3. The panel shall follow the NACS Standards for Judging and the Judges Chair's directions.
4. All judges should refrain from judging any entry in which they may have any relationship that might be construed as interfering with their impartiality.
5. The Show Chair has the final authority and must agree to disqualify an entry that is diseased, infested, or does not conform to any other rules stated in the show schedule.
6. Judging shall be in accordance with the Schedule of Points and the Horticultural Scale of Points as described in this show schedule.

SCHEDULE OF POINTS

	Condition and Plant Balance	Foliage Qualities	Umbel Symmetry	Flower Form and Texture	Flower Color and Patterning	Grooming and Presentation
Category A: Flowering Plants	40	-	20	20	10	10
Division 23: Group U: Umbels	40	-	20	20	10	10
Division 23: Group F: Florets	20	-	-	40	20	20
Category B: Foliage Plants	40	50	-	-	-	10

HORTICULTURAL SCALE OF POINTS AWARDED FOR EACH ENTRY

Note: The vast majority of plants are entered by hobbyists. Therefore, judges are encourage to focus on category features, i.e. florets and umbels in Category A and leaves in Category B. This means using the scale of points only when necessary.

Condition and Plant Balance: *(up to 20 points may be deducted for each)*

1. The plant base (trunk) should have no brown edges or spaces. Leaves should be free of brown spots and not chlorotic.
2. There should be a pleasing visual balance between inflorescence, peduncle, foliage and container (the plant should be growing straight upright in the pot.) The peduncle (scape) must be sufficiently strong and upright to support the umbel without staking. For cut peduncles (scapes), emphasis will be placed on the overall balance of the peduncle (scape) and its strength and ability to support the umbel.

Foliage Qualities: *(up to 5 points may be deducted for each)*

1. Brightness refers to the degree of light reflecting from surface of the leaves.
2. Smoothness refers to the surface of leaves. It is clearly seen with a magnifying glass.
3. Rigidity refers to the bending strength of the whole leaf (longitudinal strength).
4. Thickness refers to a consistency of the thickness across the leaf (non-longitudinal strength).
5. Veins refer to the vascular structure of the leaves.
6. Color or colors should be clear and evenly distributed within their appropriate zones, according to their classification.
7. Leaf shape refers to the ratio of length to width.
8. Leaf arrangement refers to the symmetry and even distribution of the leaves.
9. Base shape refers to the symmetry plant base.
10. Leaf tips refer to uniformity at the ends of the leaves.

Umbel Symmetry: *(up to 5 points may be deducted for each)*

1. The umbel should be bilaterally symmetrical (i.e., no pedicel irregularities) when viewed from all sides. For the pendulous species a slight asymmetry is allowed, but this is not desirable for *C. miniata* and inter-specific hybrids.
2. Umbel should be well-filled but not overcrowded.
3. Flowers should be evenly distributed (i.e., no gaps or valleys)
4. At least 50% of the umbel should be fully opened with no more than 2 spent flowers.

Flower Form and Texture: *(up to 5 points may be deducted for each)*

1. There should be consistent fenestration (spacing between the tepals) within the flowers.
2. There should be consistency of flower form (i.e., no flower mutations) within the entire umbel.
3. Tepals should be bilaterally symmetrical.
4. Tepals should have a smooth surface (unless otherwise specified by their classification).

Flower Color and Patterning: *(up to 5 points may be deducted for each)*

1. The color or colors should be clear.
2. The color or colors should be evenly distributed or gradated within their appropriate zones, according to their classification.

HORTICULTURAL SCALE OF POINTS AWARDED FOR EACH ENTRY (CON'T)

Grooming and Presentation:

Note: NACS places the importance on the horticultural qualities of entered Clivia above the grooming and presentation.

1. All plant parts should appear undamaged when placed on the show floor. Allowances will be made for trimming or transport damage.
2. All plant parts should be clean and free of pests.
3. Bracts may be removed or left intact.
4. Anthers should be attached to their filament. However, umbels missing anthers should not be penalized.
5. Leaves may be trimmed to remove scarred or damaged tissue.
6. Leaves may not be waxed or shined.
7. An unnaturally colored plant base (trunk) resulting from the removal of old leaves is undesirable.
8. Ideally, the plant should be centered in the pot.
9. Pots should be cleaned to remove dirt and/or hard water deposits or placed in a pot cover.
10. The top dressing should be fresh with no other organisms present (moss, fungus, etc.).

Note: The type or style of pots and top dressings should have no bearing on the presentation score, but may be considered in the event of an otherwise point tie.